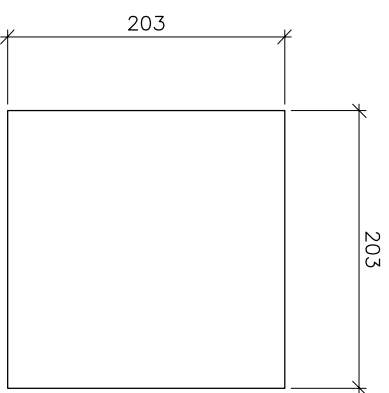
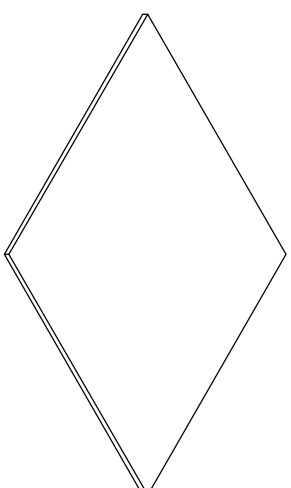


WELDED	CHECKED	FITTED	CUT
--------	---------	--------	-----

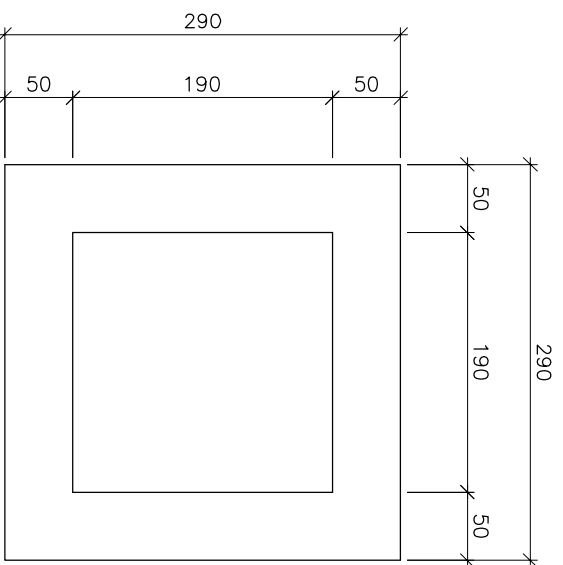


TOP VIEW

1 REQ'D (A)

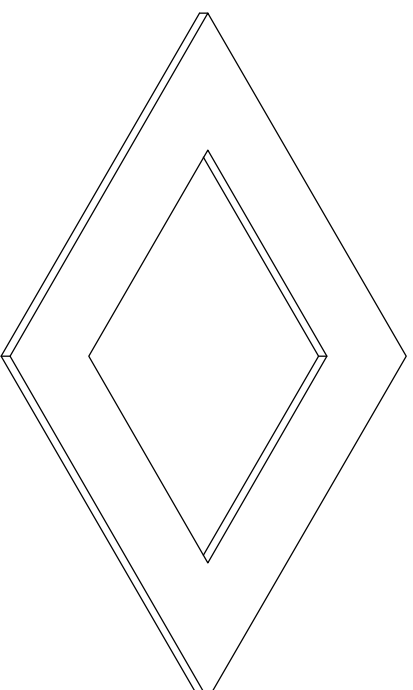


ISOMETRIC VIEW



TOP VIEW

1 REQ'D (B)



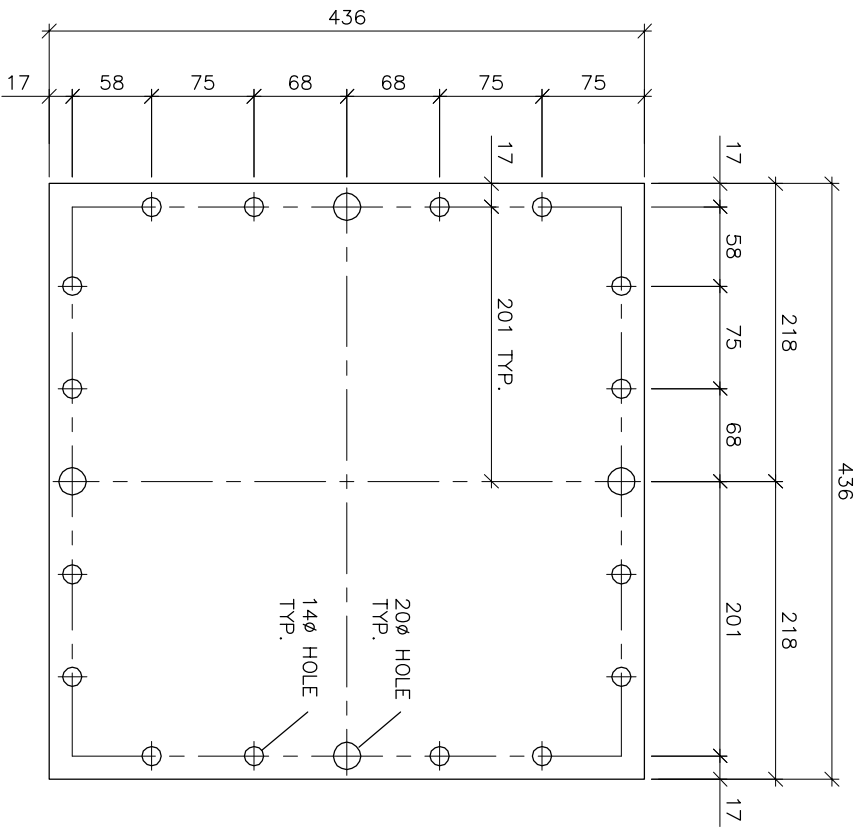
ISOMETRIC VIEW

MARK	QNT	DESCRIPTION	LENGTH	REMARKS	MARK	QNT	DESCRIPTION	LENGTH	REMARKS
A	1	PL 3.5mm x 203	203						
B	1	PL 6.35mm x 290	290						

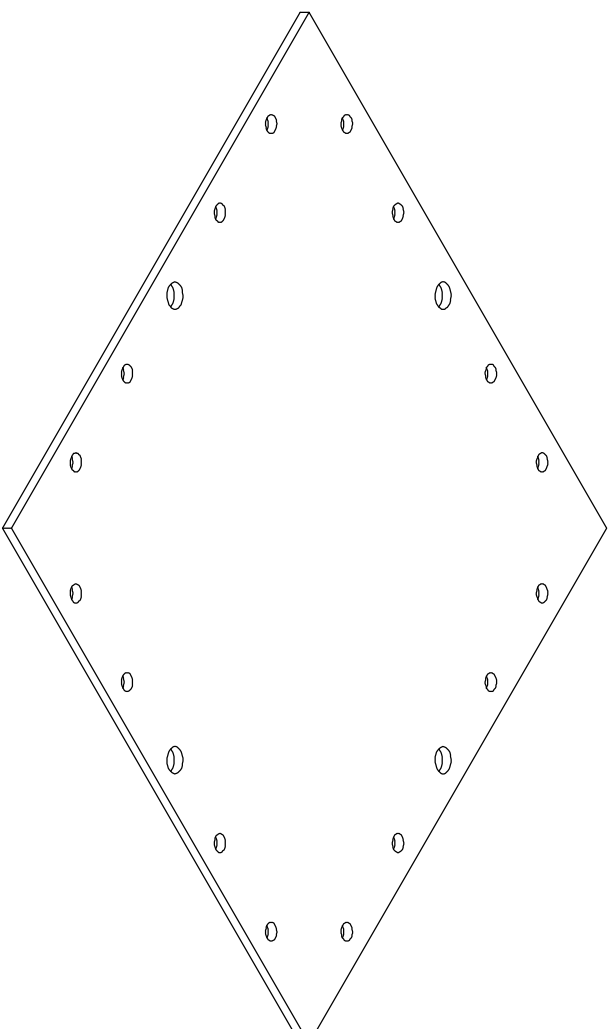
QNT	TYPE	LEN
	FIELD BOLTS	
HOLES: 14 mm Dia.		
PAINT: No Paint		
MAT. SPEC: 300W		

Rev 1	May 2008	RMC	Steel Mold Members
NUMBER	DATE	BY	SUBJECT
DRAWN	RMC	10/05/08	CUSTOMER David H. Manz
CHK'D BY			PROJECT STEEL MOLD
DWG REF			
Manz Engineering Ltd.			
Alberta, Canada			
JOB #	98054	DWG #	1
REV #	1		

WELDED	CHECKED	FITTED	CUT
--------	---------	--------	-----



PLAN VIEW



ISOMETRIC VIEW

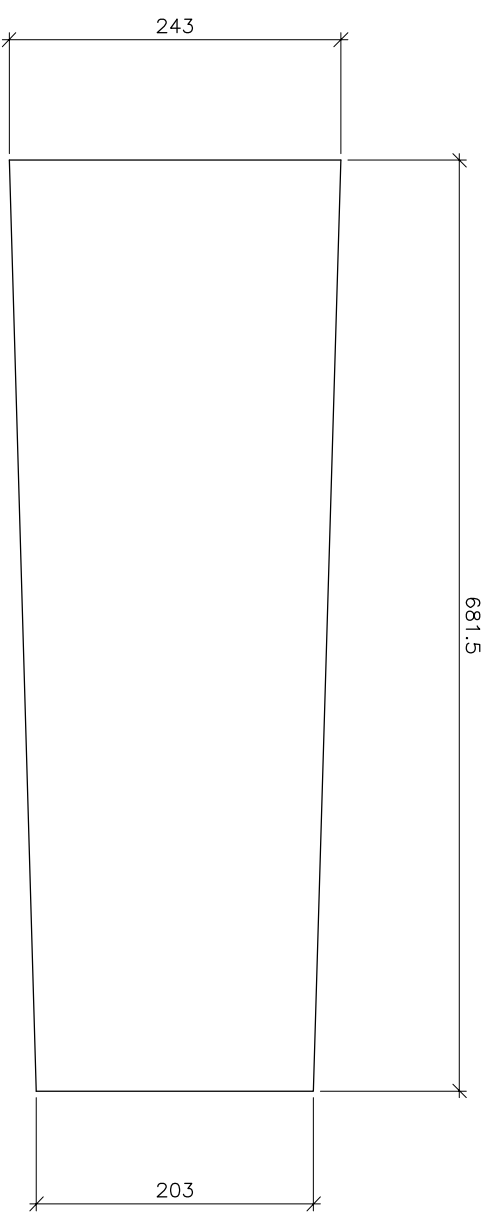
1 REQ'D C

MARK	QTY	DESCRIPTION	LENGTH	REMARKS	MARK	QTY	DESCRIPTION	LENGTH	REMARKS
C	ONE	PL 6.35mm x 431	436						

QTY	TYPE	LEN
	FIELD BOLTS	
	HOLES: 14 & 20mm Dia.	
	PAINT: No Paint	
	MAT. SPEC: 300W	

Rev 1	May 2008	RMC	Steel Mold drawings
NUMBER	DATE	BY	SUBJECT
DRAWN	RMC	10/05/08	CUSTOMER David H. Manz
CHK'D BY			PROJECT STEEL MOLD
DWG REF			
Manz Engineering Ltd.			
Alberta, Canada			
JOB #	98054	DWG #	2
REV #	1		

WELDED	CHECKED	FITTED	CUT
--------	---------	--------	-----



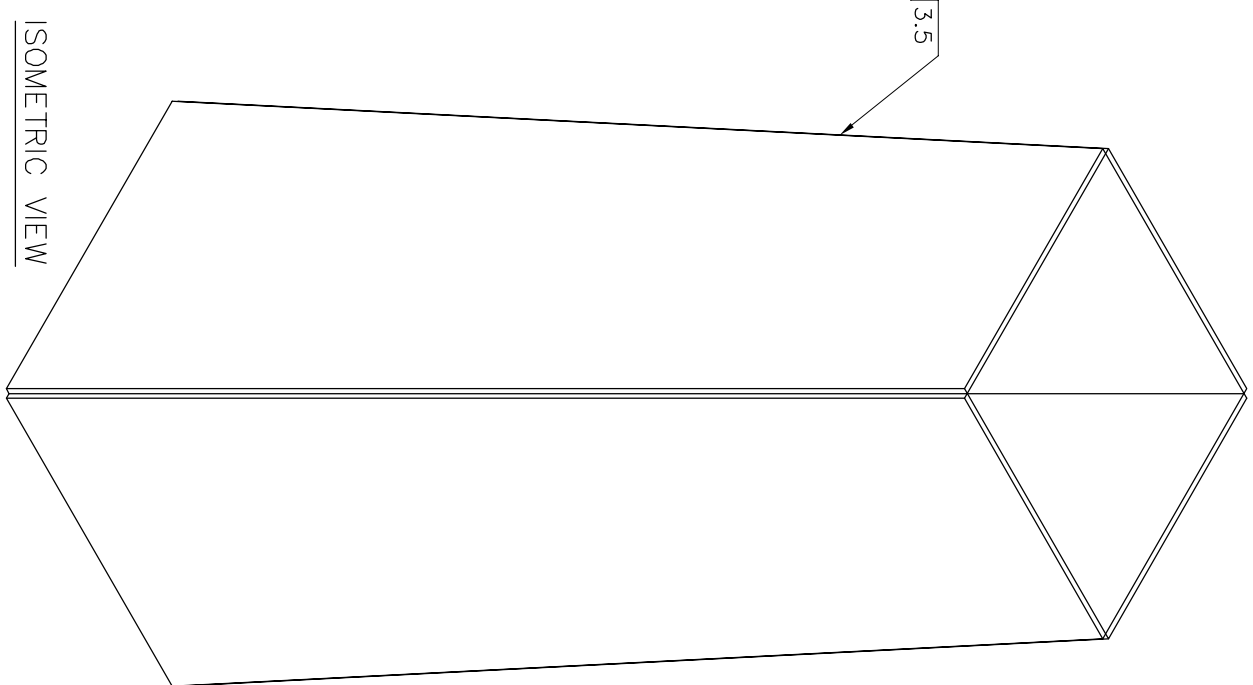
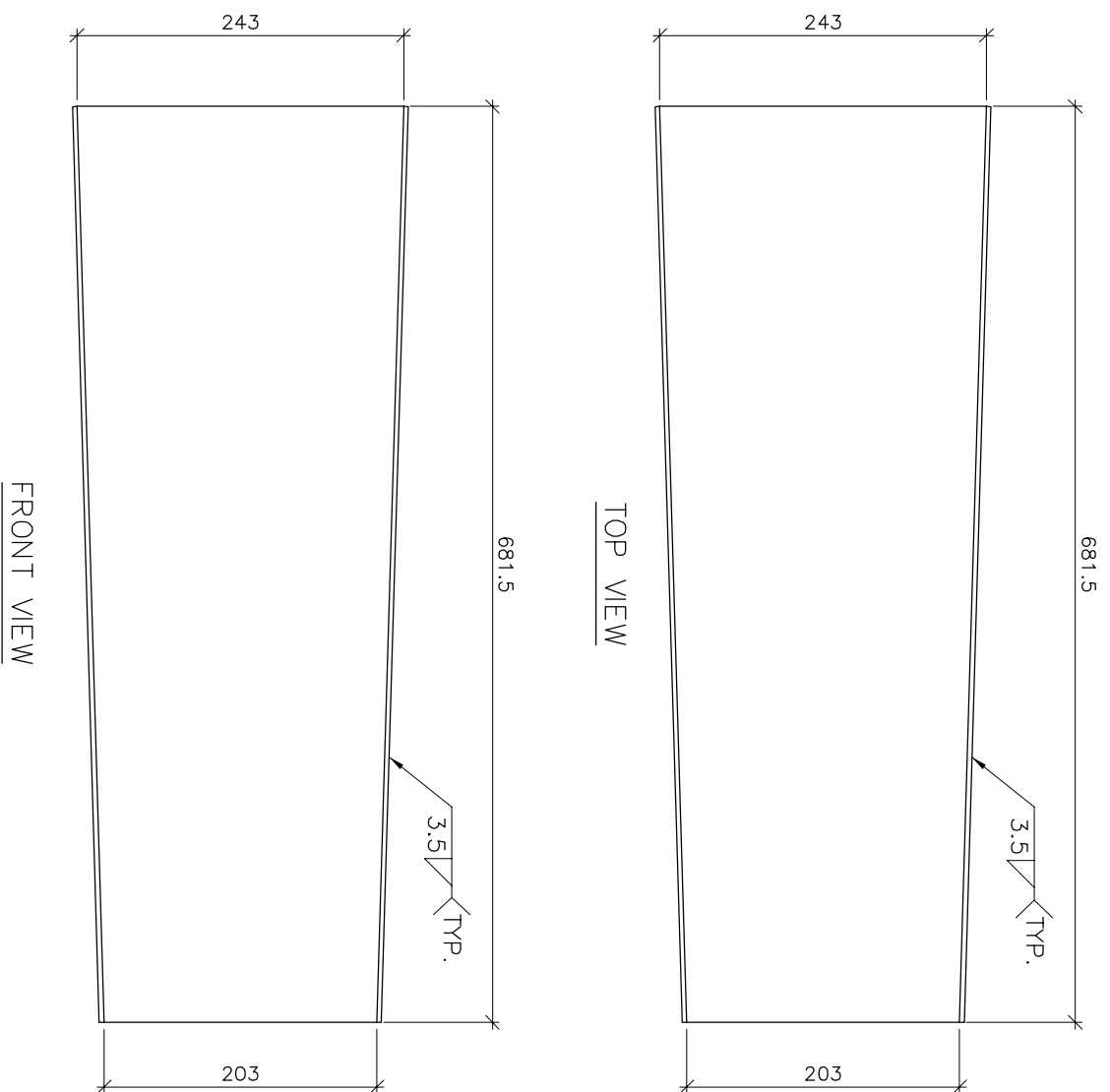
4 REQ'D $\text{\textcircled{D}}$

MARK	QNT	DESCRIPTION	LENGTH	REMARKS	MARK	QNT	DESCRIPTION	LENGTH	REMARKS
D	4	PL 3.5mm 203/243	681.5						

QNT	TYPE	LEN
FIELD BOLTS		
HOLES: 14 mm Dia.		
PAINT: No Paint		
MAT. SPEC: 300W		

Rev 1	May 2008	RMC	Steel Mold Members
NUMBER	DATE	BY	SUBJECT
DRAWN	RMC	10/05/08	CUSTOMER David H. Manz
CHK'D BY			PROJECT STEEL MOLD
DWG REF			
Manz Engineering Ltd.			
Alberta, Canada			
JOB #	98054	DWG #	3
REV #	1		

WELDED	CHECKED	FITTED	CUT
--------	---------	--------	-----



ASSEMBLY DRAWING
1 REQ'D (D1)

MARK	QNT	DESCRIPTION	LENGTH	REMARKS	MARK	QNT	DESCRIPTION	LENGTH	REMARKS
D1	ONE	ASSEMBLY	681.5						

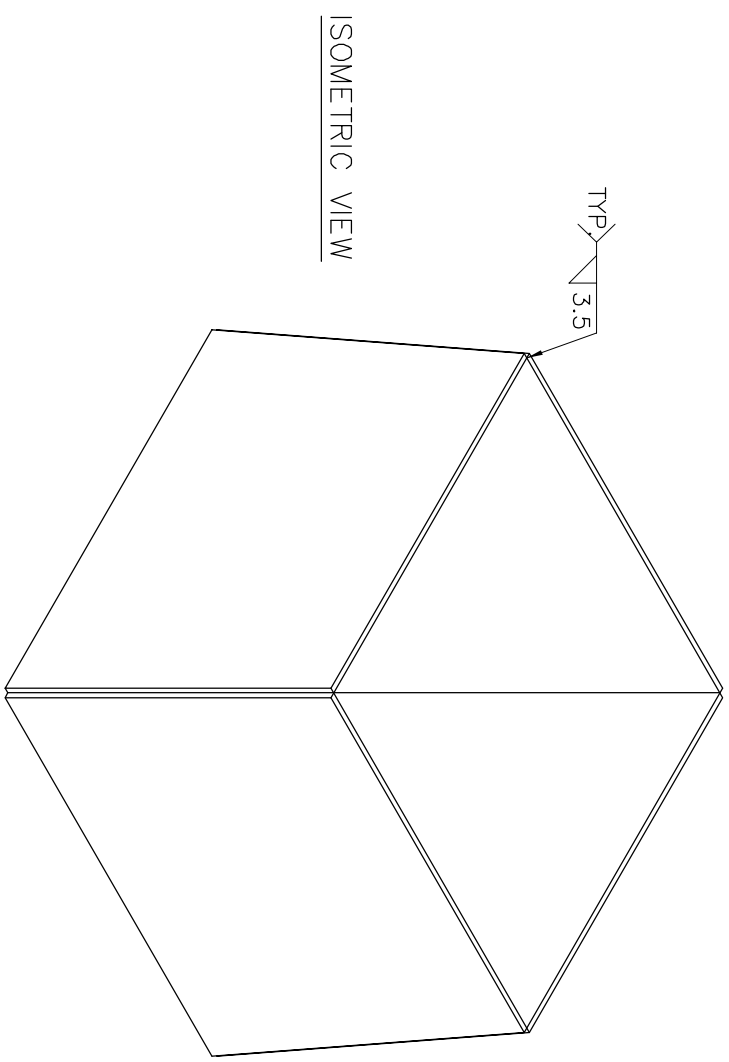
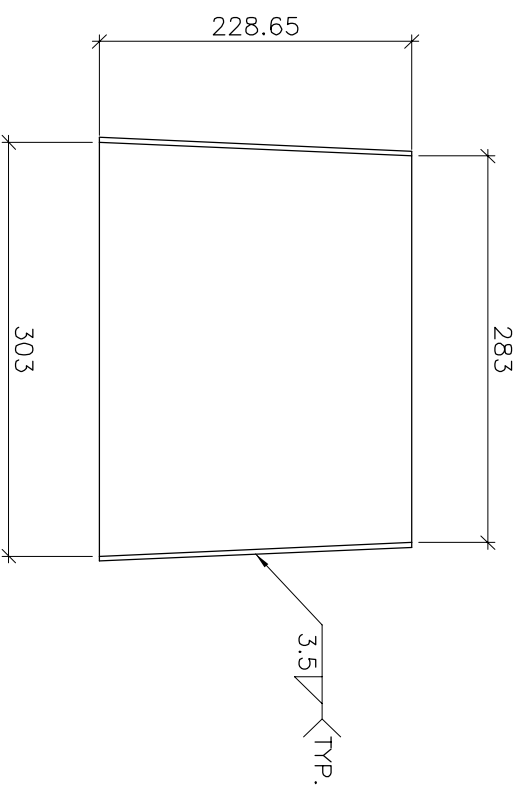
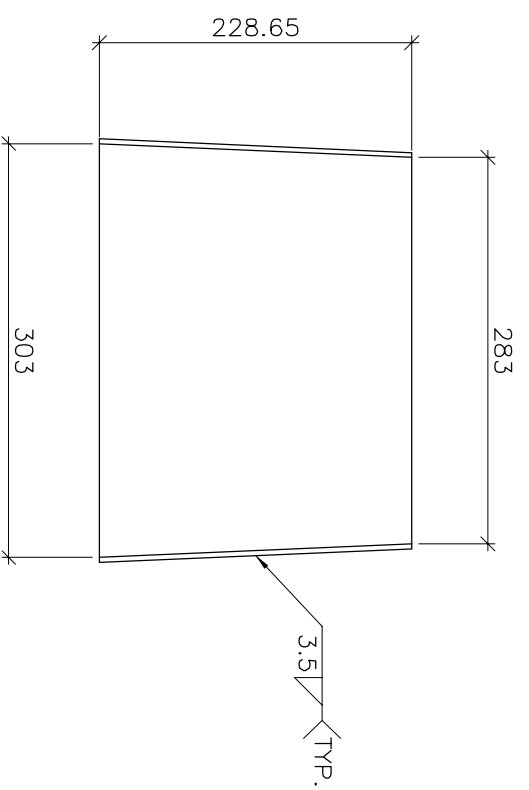
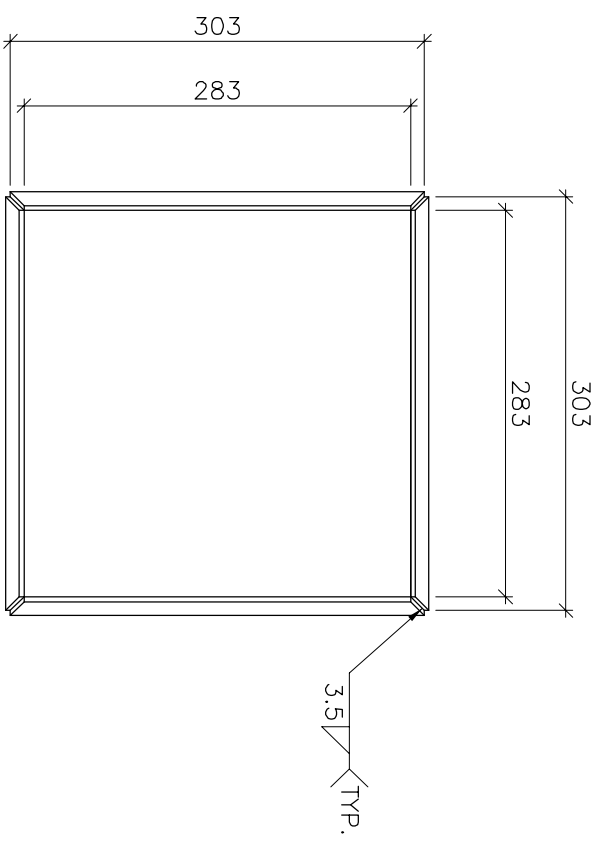
QNT	TYPE	LEN
	FIELD BOLTS	
HOLES: 14 mm Dia.		
PAINT: No Paint		
MAT. SPEC: 300W		

Rev 1	May 2008	RMC	-
NUMBER	DATE	BY	SUBJECT
DRAWN	RMC	10/05/08	CUSTOMER David H. Manz
CHK'D BY			PROJECT STEEL MOLD
DWG REF			

Manz Engineering Ltd.
Alberta, Canada

JOB #	DWG #	REV #
98054	3A	1

WELDED	CHECKED	FITTED	CUT
--------	---------	--------	-----



1 REQ'D (E1)

ASSEMBLY DRAWING

FRONT VIEW

RIGHT SIDE VIEW

ISOMETRIC VIEW

TOP VIEW

MARK	QNT	DESCRIPTION	LENGTH	REMARKS	MARK	QNT	DESCRIPTION	LENGTH	REMARKS
E1	ONE	ASSEMBLY	228.65						

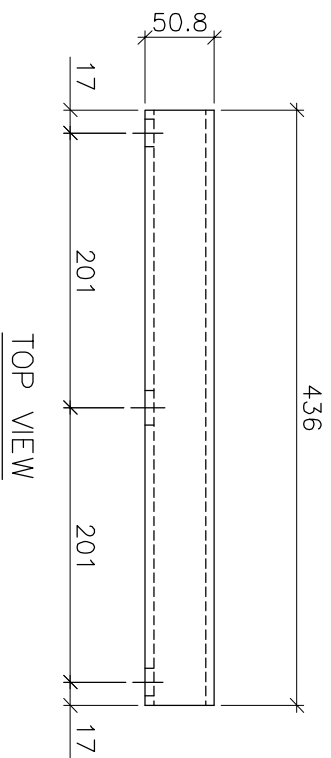
QNT	TYPE	LEN
	FIELD BOLTS	

HOLES: 14 mm Dia.
PAINT: No Paint
MAT. SPEC: 300W

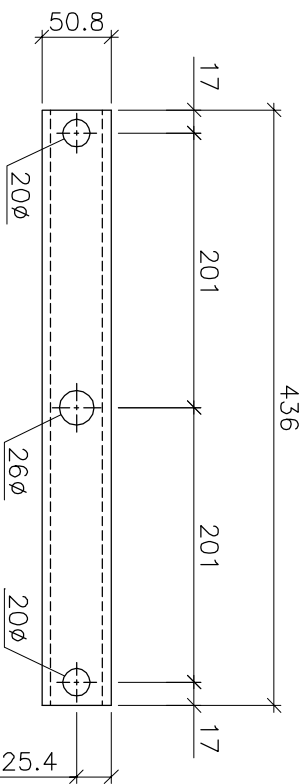
Rev 1	May 2008	RMC	Steel Mold Members
NUMBER	DATE	BY	SUBJECT
DRAWN	RMC	10/05/08	CUSTOMER David H. Manz
CHK'D BY			
DWG REF			

Manz Engineering Ltd.		JOB #	DWG #	REV #
Alberta, Canada		98054	4A	1
PROJECT		STEEL MOLD		

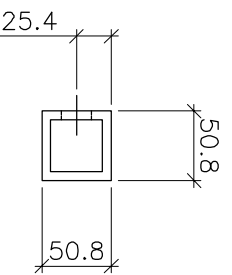
WELDED	CHECKED	FITTED	CUT
--------	---------	--------	-----



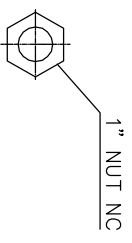
TOP VIEW



FRONT VIEW



RIGHT SIDE VIEW



1 REQ'D (F1)

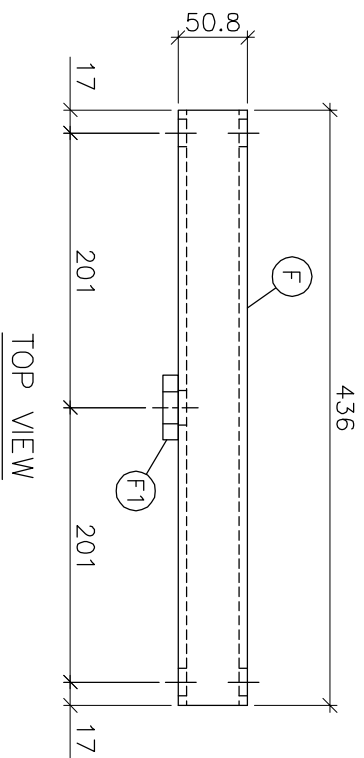
1 REQ'D (F)

MARK	QNT	DESCRIPTION	LENGTH	REMARKS	MARK	QNT	DESCRIPTION	LENGTH	REMARKS
F	ONE	HSS 50.8 x 50.8 x 6.35	436						
F1	ONE	1" NUT NC							

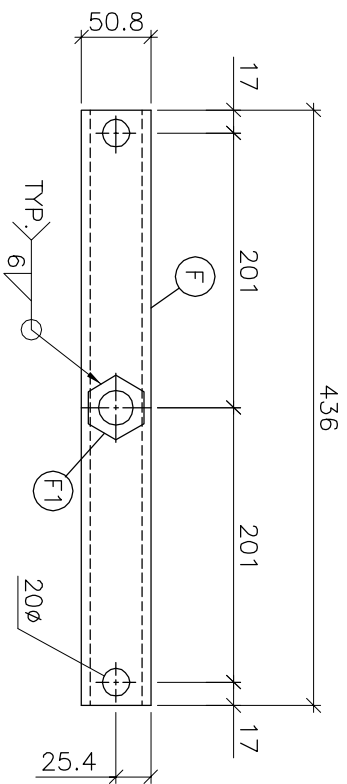
QNT	TYPE	LEN
FIELD BOLTS		
HOLES: 20 & 26 mm Dia		
PAINT: No Paint		
MAT. SPEC: 300W		

Rev 1	May 2008	RMC	Steel Mold Members
NUMBER	DATE	BY	SUBJECT
DRAWN	RMC	10/05/08	CUSTOMER David H. Manz
CHK'D BY			PROJECT STEEL MOLD
DWG REF			
Manz Engineering Ltd.			
Alberta, Canada			
JOB #	98054	DWG #	5
REV #	1		

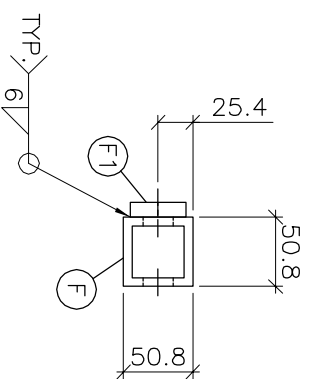
WELDED	CHECKED	FITTED	CUT
--------	---------	--------	-----



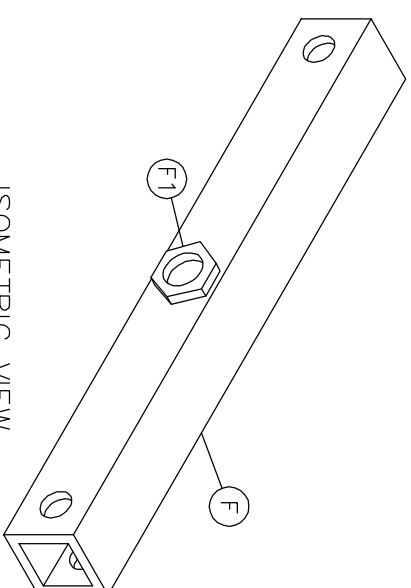
TOP VIEW



FRONT VIEW



RIGHT SIDE VIEW



ISOMETRIC VIEW

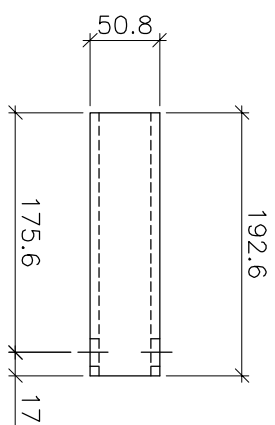
ASSEMBLY DRAWING
1 REQ'D (FF)

MARK	QTY	DESCRIPTION	LENGTH	REMARKS	MARK	QTY	DESCRIPTION	LENGTH	REMARKS
F	ONE	HSS 50.8 x 50.8 x 6.35	436						
F1	ONE	1" NUT NC							

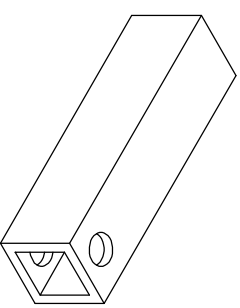
QTY	TYPE	LEN
	FIELD BOLTS	
HOLES: 20 & 26 mm Dia		
PAINT: No Paint		
MAT. SPEC: 300W		

Rev 1	May 2008	RMC	Steel Mold Members
NUMBER	DATE	BY	SUBJECT
DRAWN	RMC	10/05/08	CUSTOMER David H. Manz
CHK'D BY			
DWG REF			PROJECT STEEL MOLD
Manz Engineering Ltd.			
Alberta, Canada			
JOB #	98054	DWG #	5A
REV #	1		

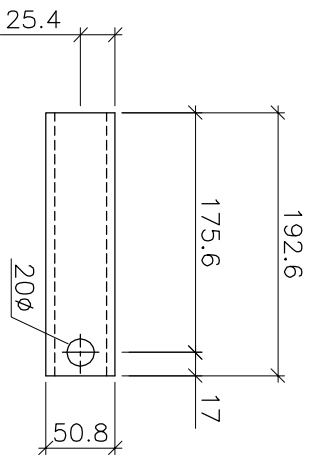
WELDED	CHECKED	FITTED	CUT
--------	---------	--------	-----



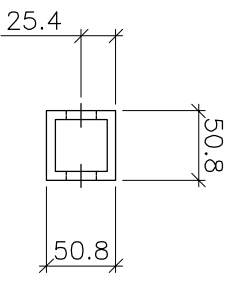
TOP VIEW



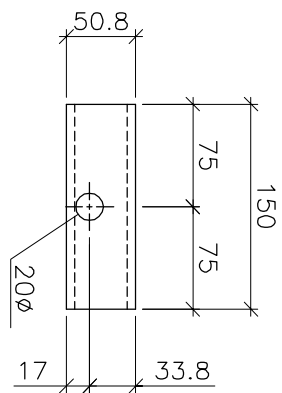
ISOMETRIC VIEW



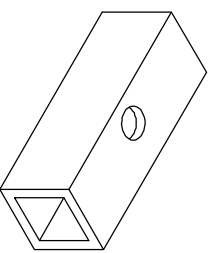
FRONT VIEW



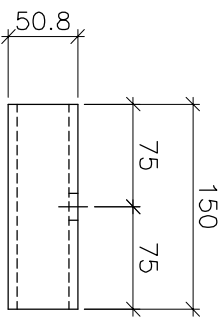
RIGHT SIDE VIEW



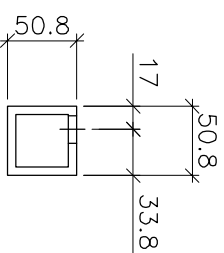
TOP VIEW



ISOMETRIC VIEW



FRONT VIEW



RIGHT SIDE VIEW

2 REQ'D (G)

4 REQ'D (H)

MARK	QNT	DESCRIPTION	LENGTH	REMARKS	MARK	QNT	DESCRIPTION	LENGTH	REMARKS
G	2	HSS 50.8 x 50.8 x 6.35	192.6						
H	4	HSS 50.8 x 50.8 x 6.35	150						

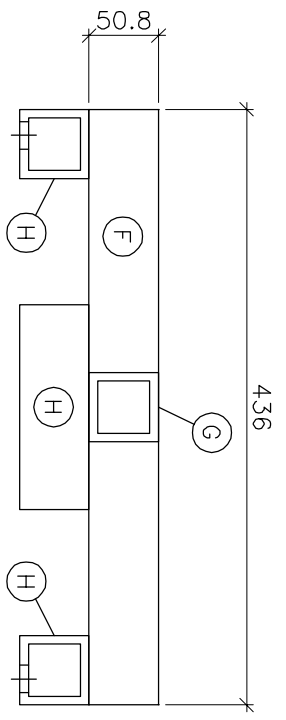
QNT	TYPE	LEN
	FIELD BOLTS	
	HOLES: 20 mm Dia.	
	PAINT: No Paint	
	MAT. SPEC: 300W	

NUMBER	DATE	BY	SUBJECT
Rev 1	May 2008	RMC	Steel Mold Members

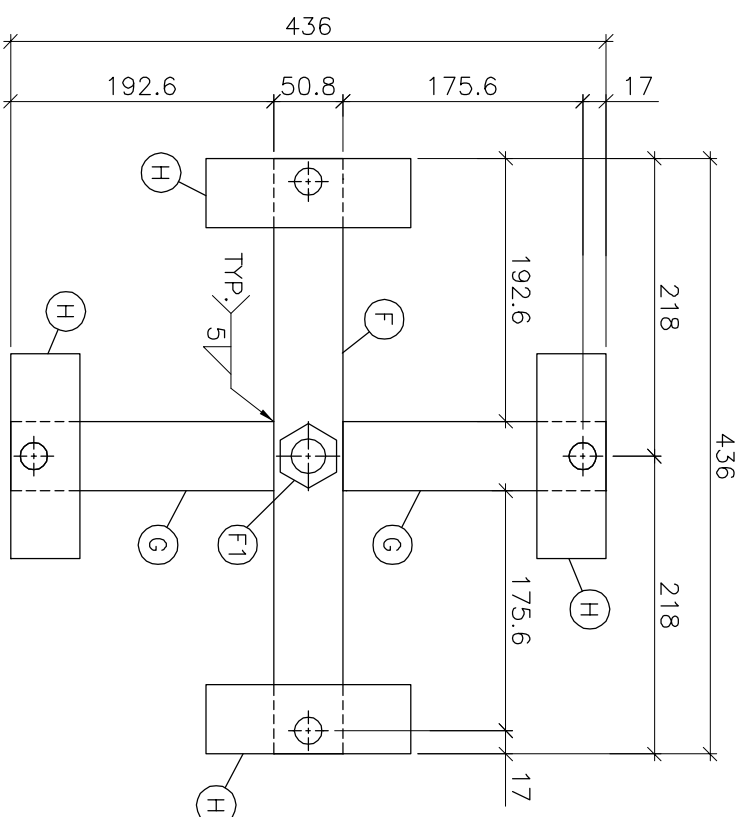
DRAWN	RMC	10/05/08	CUSTOMER David H. Manz
CHK'D BY			
DWG REF			PROJECT STEEL MOLD

Manz Engineering Ltd.		JOB #	DWG #	REV #
Alberta, Canada		98054	6	1

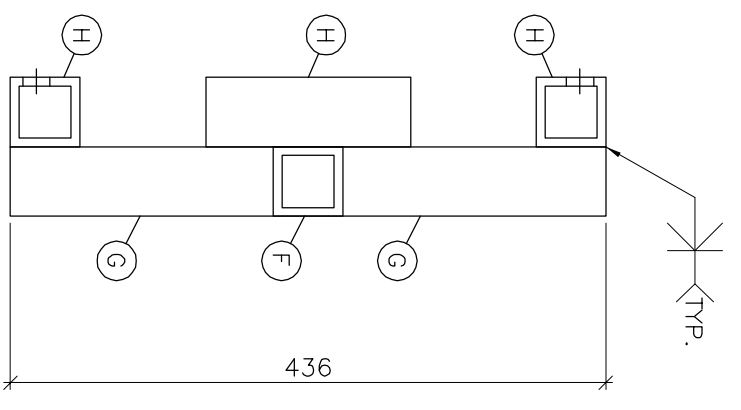
CUT	FITTED	CHECKED	WELDED
-----	--------	---------	--------



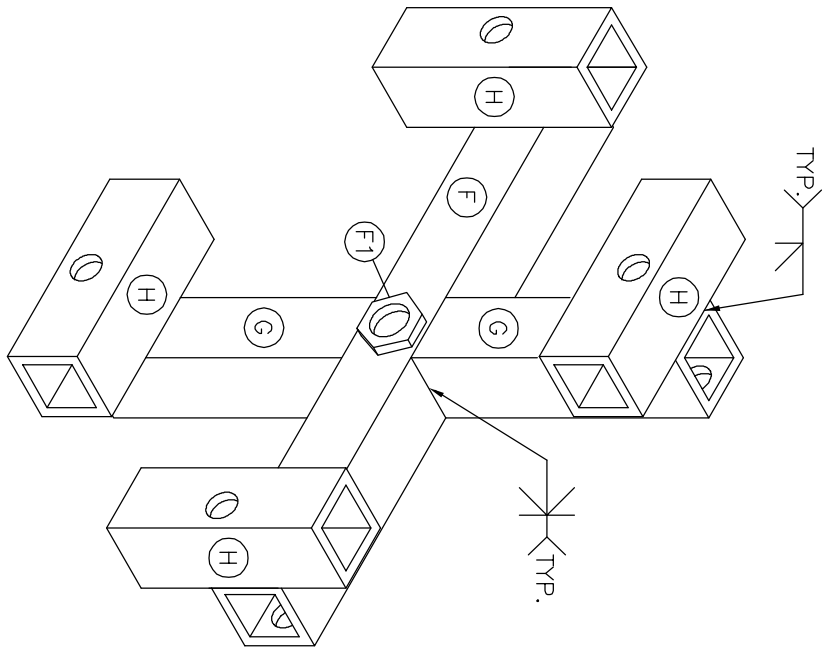
TOP VIEW



FRONT VIEW



RIGHT SIDE VIEW



ISOMETRIC VIEW

ASSEMBLY DRAWING

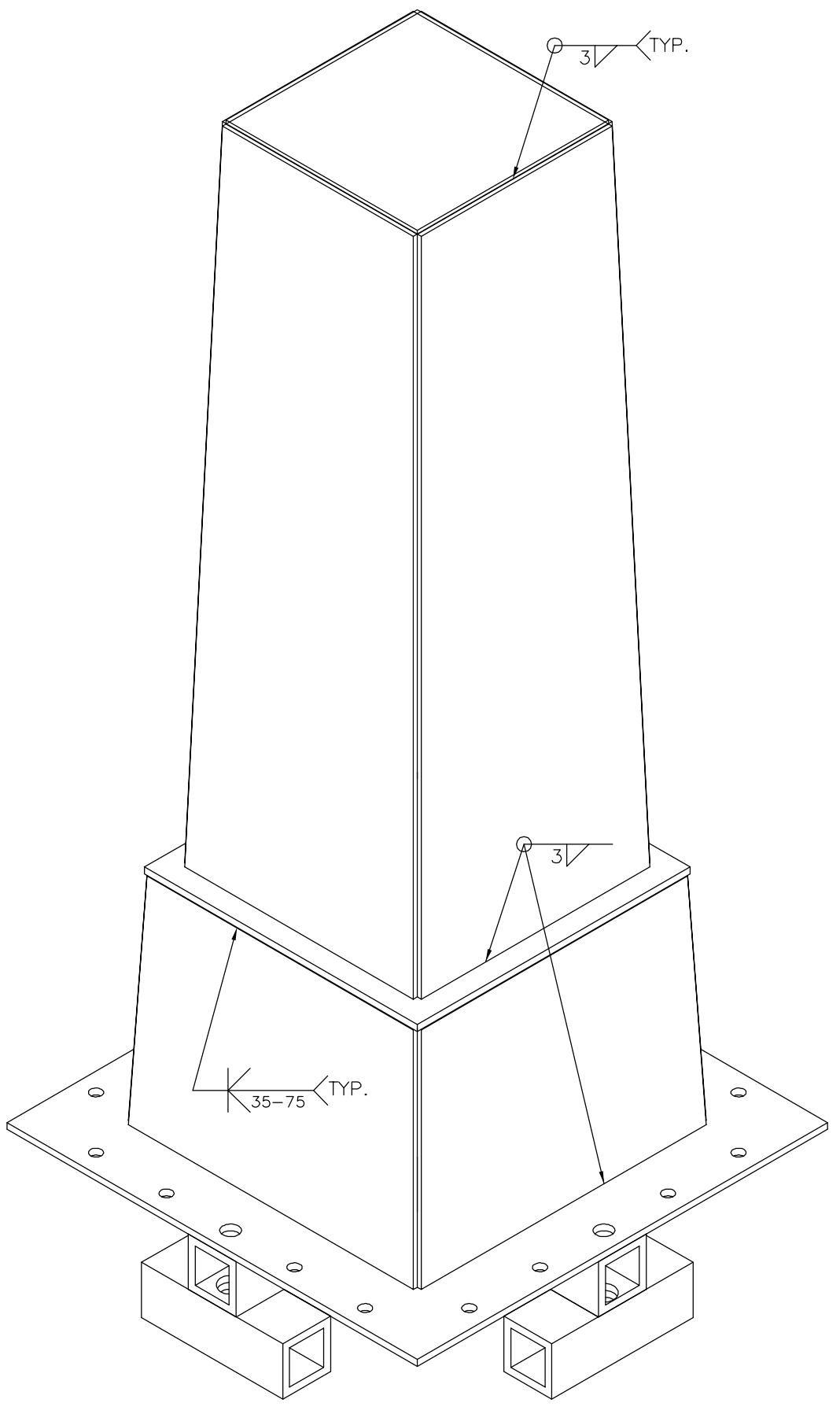
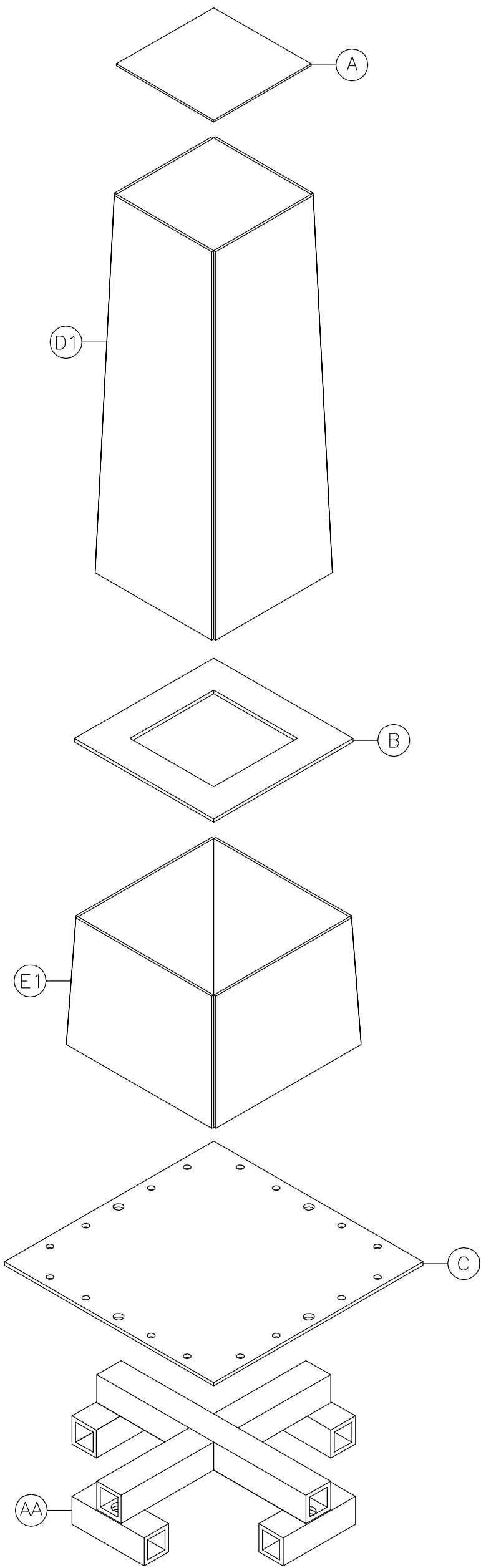
MARK	QNT	DESCRIPTION	LENGTH	REMARKS	MARK	QNT	DESCRIPTION	LENGTH	REMARKS
F	ONE	HSS 50.8 x 50.8 x 6.35	436						
F1	ONE	1" NUT NC							
G	2	HSS 50.8 x 50.8 x 6.35	192.6						
H	4	HSS 50.8 x 50.8 x 6.35	150						

FIELD BOLTS	QNT	TYPE	LEN
HOLES: -			
PAINT: No Paint			
MAT. SPEC: 300W			

Rev 1	May 2008	RMC	Steel Mold Members
NUMBER	DATE	BY	SUBJECT
DRAWN	RMC	10/05/08	CUSTOMER David H. Manz
CHK'D BY			
DWG REF			

Manz Engineering Ltd.		JOB #	DWG #	REV #
Alberta, Canada		98054	7	1
PROJECT		STEEL MOLD		

WELDED	CHECKED	FITTED	CUT
--------	---------	--------	-----



ASSEMBLY DRAWING

A	1	PL. 3.5mm x 203	203																	
AA	1	ASSEMBLY	436							Rev 1	-	-	Assembly drawing							
B	1	PL 6.35 x 290	290							NUMBER	DATE	BY	SUBJECT							
C	1	PL 6.35 x 436	436							DRAWN	RMC	22/11/06	CUSTOMER David H. Manz							
D1	1	ASSEMBLY	681.5							CHK'D BY			PROJECT STEEL MOLD							
E1	1	ASSEMBLY	228.65							DWG REF										
				FIELD BOLTS																
				HOLES: -																
				PAINT: No Paint																
				MAT. SPEC: 300W																
MARK	QNT	DESCRIPTION	LENGTH	REMARKS	Manz Engineering Ltd. Alberta, Canada					JOB # 98054		DWG # 8		REV # 0						